



17
18

pandector, à wär et bēymal,
Bing bēw bing, davis,
man allos lej, gashing findat.
Ein/midi' lēw hie est.

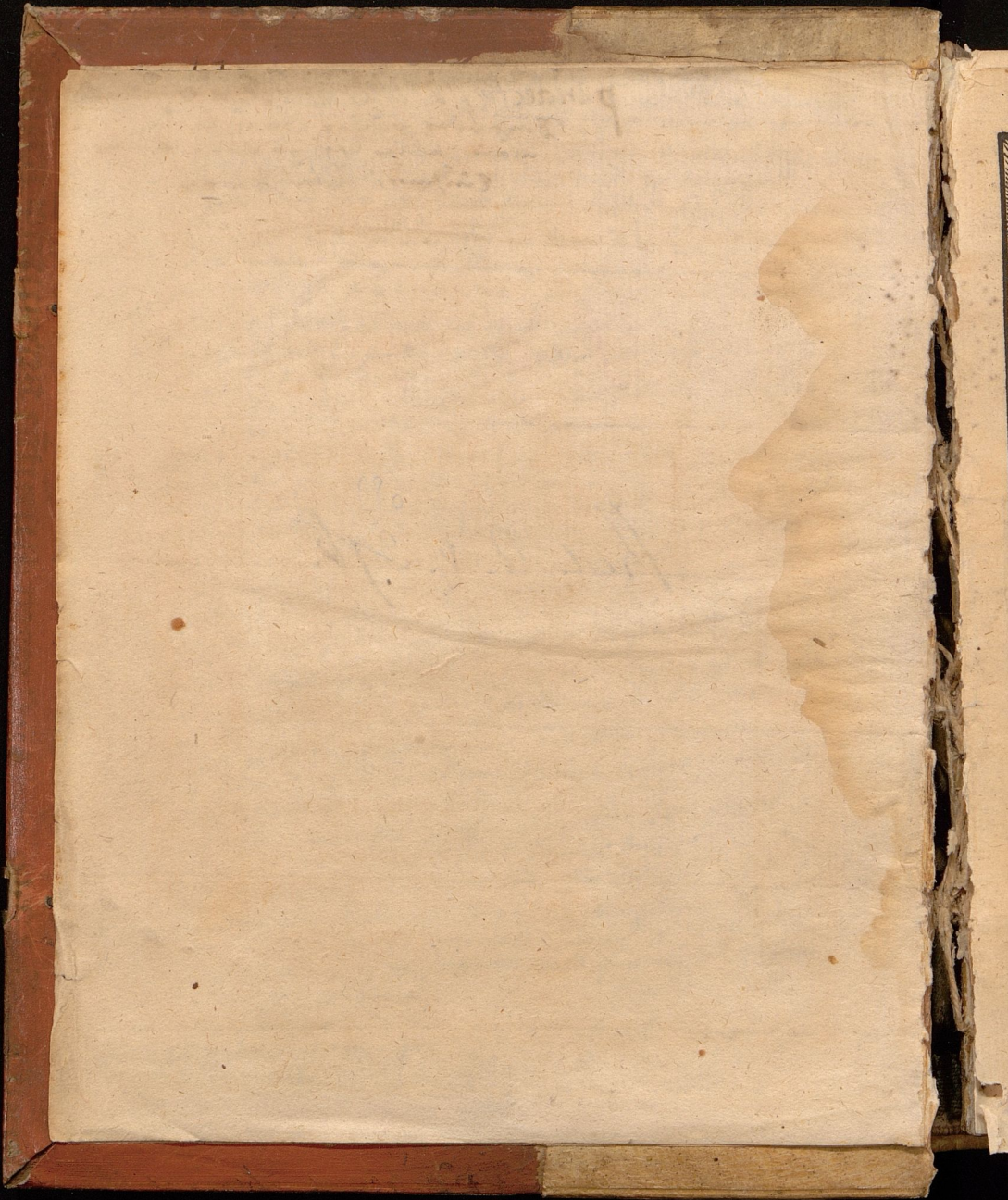
18 N

G. f. 148

689

Thes. Q. v. 396.





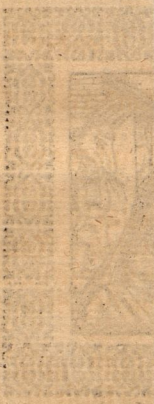
2



ASTICA
TIVITA

DI METRO ACA

Handwritten text, possibly a signature or date, located below the printed text.



Vertical text or markings on the left side of the page, possibly bleed-through from the reverse side.

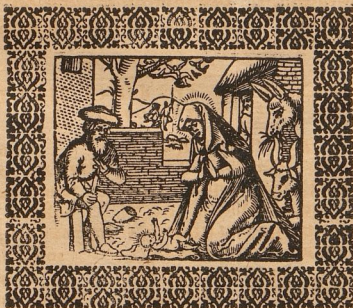
Additional faint text or markings at the bottom of the page, possibly bleed-through or a second stamp.



ODA ECCLESIASTICA VETVS, DE NATIVITA- TE DOMINI

ΤΕΤΡΑΓΩΤΤΟΣ.

PARI CARMINĒ IAMBICO DIMETRO ACATAlect, & catalect. reddita : Paribus item rythmis atq; concētibus accommodata.



יְלֵד הַמְּהֻלָּל מֵאֵד
הַיּוֹם יוֹלֵד זָרָה לָנוּ ;
מֵעֲלֵמָה הַטּוֹכֵרָה מֵאֵד
לְנַחֵם אֶת-בְּלִנּוּ ;
אִם לֹא יוֹלֵד הוּא הַעֲלִיל
יִתְחַיֵּב כָּל-אִישׁ בְּתֵבֵל ;
לְכַלְנֵי הַיָּהוָה יִשְׁעוּהוּ ;
מִשִּׁיחַ חֲסִדוֹת אֲדָם
כְּדוּחַ יְלֹרֵם אֲדָם
שְׁסִרְנוּ-נָא מִרְשָׁו ;

Παῖς μαλ' ἀσπασὸς νέος
Τῆ σήμερον γεγώς ἦ
Ἐκ παρθένου καλλιῆ
Δαυλῶν βροτῶν θελπαρῆ.
Εἰ μὴ ἐφ' ἡ τὸ παιδίον,
Πάντες βαλῶμεν εἰς ζόφον,
Κοινὸς δὲ Σωτῆρ ὦδε.
Ἰησοῦ εἶα Χριστέ συ
Γεννηθῆς Ἀνδρῶπι Φύσι
Παρ' ἄδε ἡμᾶς σώζε.

Natus puer spectabilis
Est in orbe nobis.
De ventre puræ Virginis
Solatio gravatis,
Hic ni pusillus editus
Mundus perisset; hæc salus
Mundo datur maligno.
O dulcis infans Iesule,
Qui natus es de Virgine,
Nos cruas ab orco.

In Kindelēin so löblich/
Ist vns geboren heute/
Von einer Jungfrawn seuberlich/
Zu trost vns armen Leute.
Wer vns das Kindelēin nicht geborn/
So wern wir allzumahl verlorn/
Das Deil ist vnser alle.
Ey du süßer Jesu Christ/
Das du Mensch geboren bist/
Behüt vns für der Delle.

MAGDEBURGI.

TYPIS ANDREAE DUNCKERI.

ANNO M. DC. III.

ODA ECCLESIASTICA
VETVS DE NATIVITA

TE DOMINI
TESTAMENTO
PARI CARMINI AMRICO DIMETRO ACA



[Faint, illegible text, likely bleed-through from the reverse side of the page]

[Faint, illegible text, likely bleed-through from the reverse side of the page]



AMRICO DIMETRO ACA
TYPIS ACADEMICIS
HALLAE MAGNAE

ODA ECCLES
VETVS. DE NA

TE DOMIN
TETIARIT
PARTI CARMINI IAMBICO



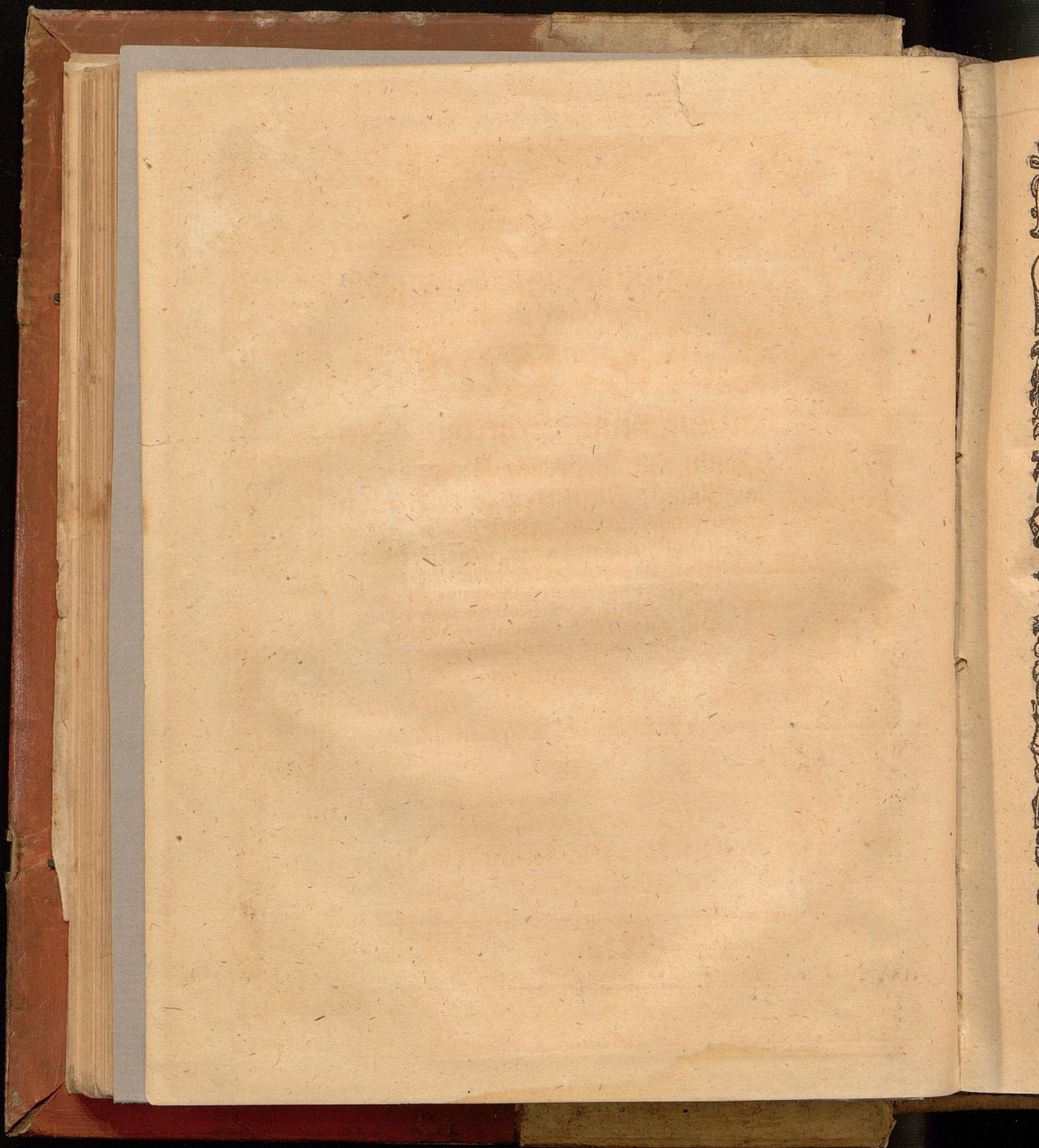
Illegible faint text, possibly bleed-through from the reverse side of the page.



51.

3





153507
AB: 153507

ULB Halle
002 814 803 3

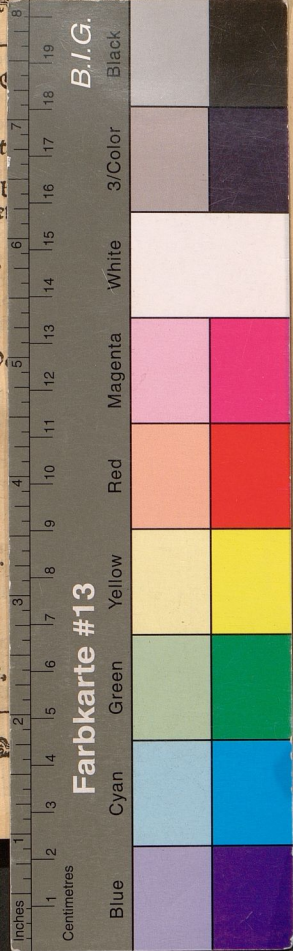


80

VD 17







ODA ECCLESIASTICA VETVS, DE NATIVITA-

TE DOMINI
ΤΕΤΡΑΓΩΤΤΟΣ.

PARI CARMINI IAMBICO DIMETRO ACATAle&, & catale&. reddita : Paribus item rythmis atq; concentibus accommodata.



יְלֵד הַמַּחְלָה לְמַרְיָם
הַיּוֹם יוֹלַד זֶה לָנוּ :
מַעֲלֵמָה הַטּוֹבָה לְמַרְיָם
לְנַחֵם אֶת־בְּלִבּוֹ :
אֵם לֹא יוֹלַד הַזֶּה הַעֲלִיל
וְתַחֲבוֹב כָּל־אִישׁ בְּתַחְבּוֹ
לְבָבּוֹ הֵיאָה יְשׁוּעָה :
מְשִׁיחַ הַמַּמְרָן אֲנִי
בְּיָדָה יוֹלַד אֲנִי
שְׁמַרְנוּ־נָא מַרְשָׁה :

Πᾶσι μαλ' ἀσπασὸς εἶσι
Τῆ σήμερον γενῶς ἡ
Ἐκ περιβόιο καλλιέσι
Δαιῶν βροτῶν θελπωῶσι.
Εἰ μὴ ἐφ' τὸ παρθένον,
Πάντες βαλῶμεν εἰς ἴσθον ;
Κοινὸς δὲ Σωτὴρ ὤθει.
Ἰησοῦ εἶα Χριστέ συ
Γενῆθες κύνθραπ' ὄφει
Παρ' ἀδὲ ἡμᾶς σώζε.

Natus puer spectabilis
Est in orbe nobis.
De ventre puræ Virginis
Solatio gravatis,
Hic ni puillus editus
Mundus perisset; hæc salus
Mundo datur maligno,
O dulcis infans Iesule,
Qui natus es de Virgine,
Nos cruas ab orco.

In Kindelein so löblich/
Ist vns geboren heute/
Von einer Jungaffrawn feuberlich/
Zu trost vns armen Leute.
Wer vns das Kindelein nicht geborn/
So wern wir allzumahl verlorn/
Das Weil ist vnser alle.
Ey du süßer Jesu Christ/
Das du Mensch geboren bist/
Behüt vns für der Delle.

MAGDEBURGI.
TYPIS ANDREAE DUNCKERI.
ANNO M. DC. III.

