



Austeilung

der Ausbeut/vom Zber=
 schuß des alten / löblichen Bergkwercks/ der
 Churfürstlichen Sächsischen Bergkstadt Freybergk
 in Meissen/ die Rechnung oder das Quarial
 Lucia / Anno 1634.

Auff nachverzeichnete IV. Zechen.

- 62 flo Hohebircke über 9 10. Maß/ sampt dem Hermes
 über 4. 5. Maß/ vor der Stadt.
- 20. flo. Hohebircke über 11. 12. Maß/ sampt dem Hermes
 über 6 7. Maß vor der Stadt.
- 10. flo. Wolchen Fundgrube vffn Brande.
- 6. flo. S. Donat über 4. 5. Maß vffn Brande.

Summa 3136. flo.



Gedruckt zu Freybergk/ bey Georg Beuthern.



Handwritten note: 27
B. 5

Handwritten text, likely a title or header, appearing as a mirror image bleed-through from the reverse side of the page. The text is mostly illegible due to fading and bleed-through.

Handwritten text, likely a title or header, appearing as a mirror image bleed-through from the reverse side of the page. The text is mostly illegible due to fading and bleed-through.

Handwritten text, likely a title or header, appearing as a mirror image bleed-through from the reverse side of the page. The text is mostly illegible due to fading and bleed-through.

Large, faint, illegible handwritten text or a large heading, appearing as a mirror image bleed-through from the reverse side of the page.



ditte amalethites et diana
reus qui habitabat in ma
te et puerorum eos aducom
dens: p[er] se est

AV

Factus est d[omi]n[u]s admo
p[er] se dicens. Loquere
ad filios ist[os]: et dices ad eos.

Quia dicitur in scripturis

lingulas et arbetes. erit sa
crificiu[m] simile duab[us] decima
ti. que con[sum]et in sacro
de partib[us] h[uius]m[od]i: et unu[m] au
thamentu[m] terne partib[us]
et semina filii

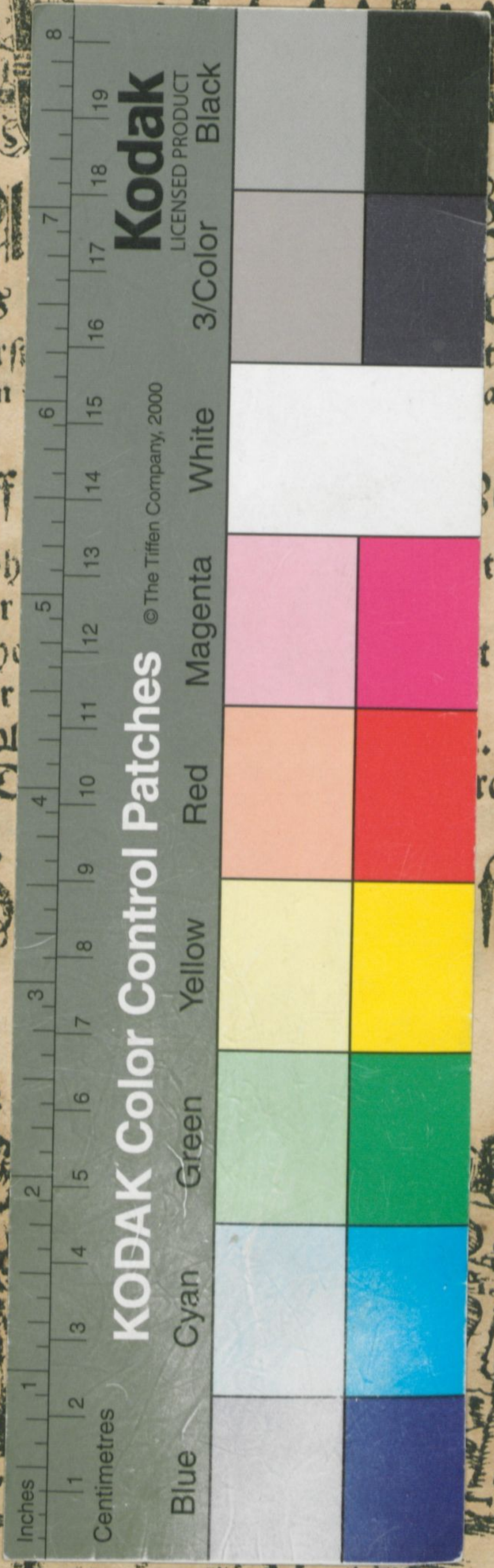
modum suavitatis d[omi]n[u]s.

Quia dicitur in scripturis

ris holocaustu[m] aut hostia



der
 schuß des
 Churfürst
 in
 Auf
 62 flo Hoh
 ober
 20. flo. Hobe
 ober
 10. flo. Mal
 6. flo. S. T



ber
 vercks/ der
 t Freybergk
 arial
 Rechen.
 t dem Hermes
 t dem Hermes
 rande.
 flo.



Gedruckt zu Freybergk/ bey Georg Beuthern.

1776
 B. 5

