

203

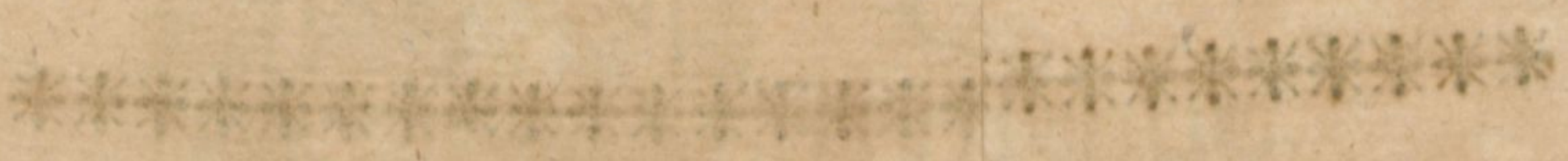
345.

SID

Rever

DNI. PAUBERI,

THEOL
1



Faint, illegible text from the reverse side of the page, possibly bleed-through.

202



D. A. V.
ACCLAMATIO VOTIVA,

^{Quam}
Iterum feliciter illucescenti

SIDERI ONOMASTICO

{ PARENTIS } Sui filialiter colendi
{ PATRONI }

VIRI

Reverendi Maximè, Amplissimi & Excellentissimi

DNI. PAULI PHILIPPI RÖBERI,

THEOLOGI-DOCTORIS FAMIGERATISSIMI

EPHORI-PASTORIS VIGILANTISSIMI

ap. Freibergens.

d. 25. Januarij

M. DC. LXXIX.

debebant

PAULUS Gottlob RÖBERUS,

& ejusdem

Informator.



Nascere, Natalis! Natalis, nascere! & altis,
Qvas Musis adfers, irrue lætitiis!
Irrue lætitiis per templa, Scholamqve, Domumqve,
Qvâ vivit STIRPIS RÖBERIÆ COLUMEN.
STIRPIS RÖBERIÆ COLUMEN nunc gaudia sentit.
Cui jam Thespiades vota precesqve canunt.
Vota precesqve canunt, RÖBERUS qvò usqve perennet;
Sed qvò sit nostrum? Vota vovere qvoqve:
Nascere, Natalis! Natalis, nascere! & istis
Sæpè celebrandis irrue lætitiis!



FREIBERGÆ,
Excudente BECKERÛ.



D. N. N.
ACCLAMATIO VOTIVA

lectura libenter illucens

SIDERE ONOMASTICO

PARENTIS }
PATRONI } Sui filii et colorandi

VIRI

Reverendi Maxime, Amplissimi & Excellentissimi

DNI PAULI PHILIPPI RÖBERI

THEOLOGICI-DOCTORIS FAMIGRATISSIMI

EPHORI-PASTORIS VIGILANTISSIMI

ap. Frisingens.

d. 27. Januarij

M. DC. LXXIX.

debetur

PAULUS GÖTTFRID RÖBERUS,

de

Informator.



Nascere Natalis! Natalis nascere! & alis

Quas Muls aders, irue lactis!

Irue lactis per campis, Schlandve, Dornpudve,

Qua vive stirpis RÖBERIAE COLUMEN.

STIRPIS RÖBERIAE COLUMEN nunc gaudia lactis.

Cui iam Thespides voru preceptve canunt.

Vota preceptve canunt, RÖBERUS duo nupve perennet;

Sed duo se nostrant, Voru voveru dno vove:

Nascere Natalis! Natalis nascere! & illis

Sapē celebrandis irue lactis!



Frisingens.

Frudente Bactro.

202

Mont
vir
M
D
SS
vi
M.C
M.
M.M
m
M.
Eli
**



D. N. V.
ACCLAMATIO

lectum (sic) illud

SIDERI ONO

PARENTIS }
PATRONI }
Sui filii

VIRI

Reverendi Maximi, Amplissimi

DNI. PAULI PHILIPPI

THEOLOGICI-DOCTORIS F.

EPHORI-PASTORIS VI

ap. Friedbergens.

d. 27. Januarii

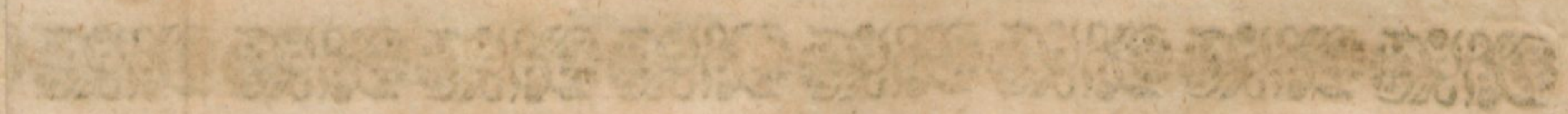
M. DC. LXI

debetur

PAULUS GOTTFRIDUS R.

de ...

Informator.



Altere Natalis!

Quas Muls aders, in

hinc lectis per. tempus

Qua vivit stirris R.

stirris RORRE GOL

Cui iam Theophrastus vor. pro

Vota precelpe canuat. RORRE



Co
Monte
virea
v.

M
D

SS.

iv

M. Ch
M. To

M. Mic
mar.

M. Ma

Elia Li



D. A. V.
ACCLAMATIO VOTIVA,
Quam
Iterum feliciter illucescenti

SIDERI ONOMASTICO

{ PARENTIS } Sui filialiter colendi
{ PATRONI }

VIRI

Reverendi Maximè, Ampliſſimi

DNI. PAULI PHILI

BERI,

THEOLOGI-DOCTORIS FA

EPHORI-PASTORIS VIG

ap. Freibergens.

d. 25. Januarij

M. DC. LXX

debeant

PAULUS Gottlob RÖ

& ejusdem

Informator.



Ascere, Natalis! Natalis, na

Qvas Musis adfers, irr

Irrue lætitiis per templa,

Qvâ vivit STIRPIS RÖ

STIRPIS RÖBERIÆ COLU

Cui jam Thespiades vota prec

Vota precesqve canunt, RÖBERU

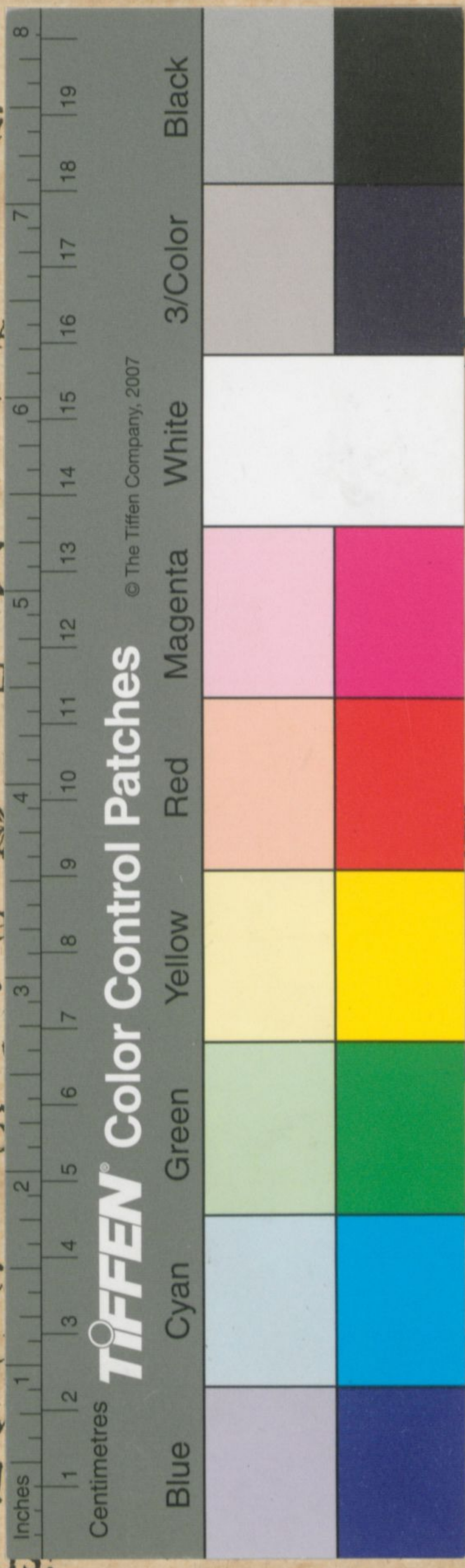
Sed quod sit nostrum? Vota v

Nascere, Natalis! Natalis, nascere!

Sæpè celebrandis irrue lætitiis.



FREIBERGÆ,
Excudente BECKERÛ.



numqve,

N.

sentit.

rennet;

